

Lenovo  
**360**

# Lenovo OEM Solutions

Harald Kalt  
BDM DACH Lenovo OEM Solutions

Andreas Pilgrim  
Geschäftsführer CNS

2023 Lenovo Partner Confidential. All rights reserved.



Lenovo



**CNS**<sup>®</sup>  
IT-Services and Solutions

# Global coverage





Lenovo

Lenovo

Lenovo

Lenovo Production in Ullo, Hungary

# Think BRANDS

ThinkShield ThinkSystem ThinkAgile ThinkIoT ThinkCloud  motorola



ThinkBook



ThinkPad



ThinkSmart



ThinkStation



ThinkPhone



ThinkCentre



ThinkEdge



ThinkVision



ThinkReality

Lenovo  
**360**

# Lenovo OEM Solutions

2023 Lenovo Partner Confidential. All rights reserved.



Lenovo

**Lenovo**<sup>™</sup>

**OEM**

## Answers to market needs

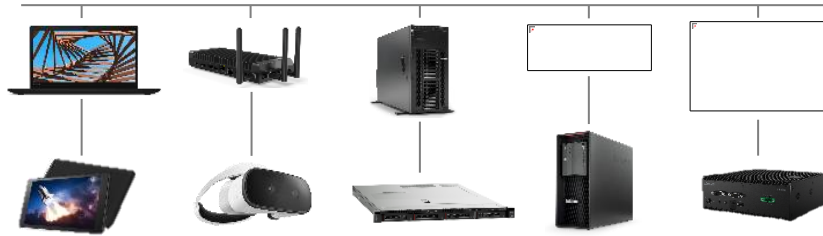
- Generate customer stickiness
- Simplify solution development
- Reduce Time to Market
- Offer global services capabilities and scale globally
- Reduce TCO (R&D, Engineering, Supply and facilities cost)
- Increase profitability for Lenovo, BP and OEM Customer



# OEM Long Life Cycle

Standard Lebenszyklus

## Lenovo Business Portfolio



Lenovo Commercial DT Produkte  
Lenovo Think Pad Produkte  
Lenovo Tablet Produkte  
Lenovo Smart Edge Produkte  
Lenovo Visuals  
Alle anderen Lenovo Produkte...

3 Jahre erweiterter Lebenszyklus

5 Jahre erweiterter Lebenszyklus

## OEM Produkte



M70x/M90x Serie  
ThinkEdge Serie  
(SE10/SE30/SE50/SE70)  
Tablet K10 2 Jahre

P3XX Workstation Serie  
P5XX Workstation Serie  
P7XX Workstation Serie  
P8XX Workstation Serie  
P9XX Workstation Serie

# Lüfterlose PCs/ Instorescreen/ Longlife Cycle Systeme



## Retail Lösungen von Instorescreen

## Lüfterlose PC Systeme:

- ThinkEdge SE10
- ThinkEdge SE30
- ThinkEdge SE50
- ThinkEdge SE70

## Lenovo Produkte mit einem verlängerten Lebenszyklus (Extended Lifecycle Systeme)



# Lenovo Chromebox Micro: Other Vertical Solutions

The Lenovo Chromebox Micro is the driving force behind advanced digital displays in various industries. This device enables interactive learning through whiteboards in education, streamlines check-ins with self-service kiosks in travel, and enhances operational oversight with monitor and control displays in manufacturing. It also improves employee management with check-in displays and delivers timely information in waiting areas. The Lenovo Chromebox Micro is essential for efficient communication and management across diverse sectors.



## 1 Interactive Whiteboards

Touch-sensitive displays that allow users to write, draw, and interact with content directly on the screen.

## 2 Campus and workplace Communications

Displays can be visual communication tools used within institutions to convey information, announcements, and events.

## 3 Waiting Rooms

Placed in reception or waiting areas, providing visitors with information, entertainment, or updates while they await their appointment or service.

## 4 Check-in Kiosks

Self-service terminals that allow guests or passengers to register, obtain boarding passes or tickets, and manage their bookings without manual assistance.

## 5 Transport

Gate and baggage displays found at transportation hubs provide passengers with real-time updates on travel status, departure/arrival gates, and baggage claim locations.

## 6 Monitor and Control

Essential for helping operators monitor and manage manufacturing processes. They provide real-time data on machinery performance, production metrics, and system health.

## 7 Employee Check-in

A digital interface designed for employees to mark their attendance facilitating efficient time tracking.

# Lenovo Chromebox Micro | Product Specifications



## Processor

Intel Celeron N4500, dual core  
Burst: 2.8GHz  
Base: 1.1GHz

## Connectivity

Wi-Fi 6  
Bluetooth 5.2  
Gigabit Ethernet

## Weight and Volume

350g, 0.25L

## Memory

8GB LPDDR4X

## Storage

32GB eMMC

## Ports

2 x USB-C 3.2 Gen 1  
2 x USB-A 3.2 Gen 1  
1 x HDMI 1.4  
1 x RJ45  
1 x Audio Jack

## Dimensions

163 x 79 x 19.7mm

## Security and Durability

Commercial grade and MIL-Spec  
24/7 operation, easy-on  
Humid resistance and dust proof  
H1 security chip


## Operating System

ChromeOS

## Serviceability and Manageability

Lenovo Warranty: 1 year  
Warranty Extension: 3 years  
Chrome Enterprise Upgrade  
Kiosk & Signage Upgrade

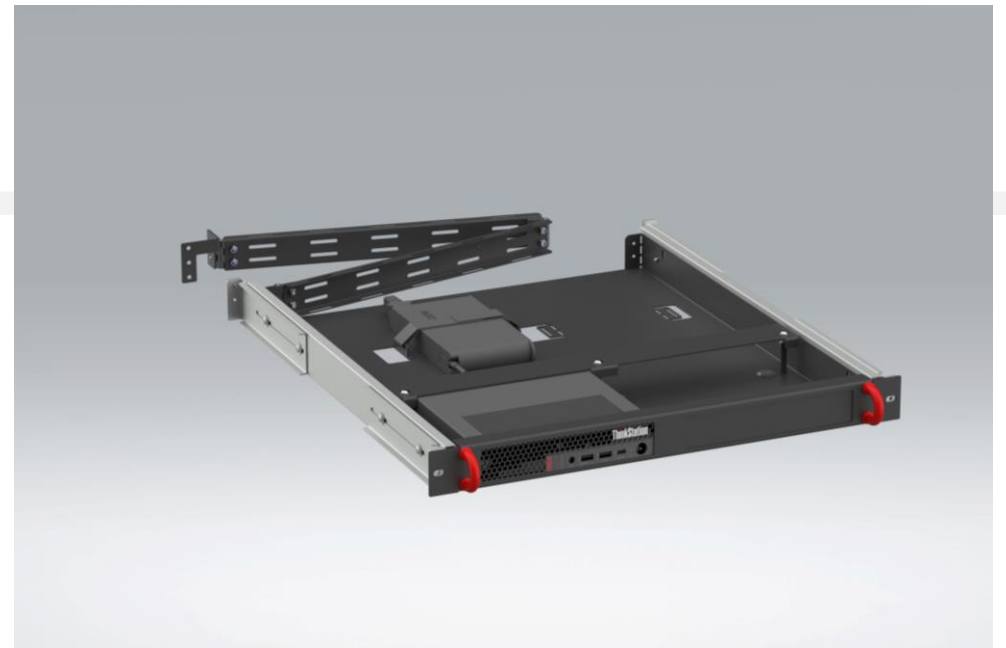
# Kunde möchte für die 3er Workstation Serie einen Rack Einschub



	P3 Tiny	P3 Ultra	P3 Tower
Processor	Intel Core i	Intel Core i	Intel Core i
Size	1 l	4 l	27 l
Max. Cores/Threads	24/32	24/32	24/32
Max. Memory (Slots)	64 GB (2)	128 GB (4)	24/32
Max. Storage	4 TB	16 TB	128 GB (4)
Max. Graphics	T1000	RTX A5500M	28 TB
Max. Power supply	300 W	300 W	RTX A5500 1.100 W

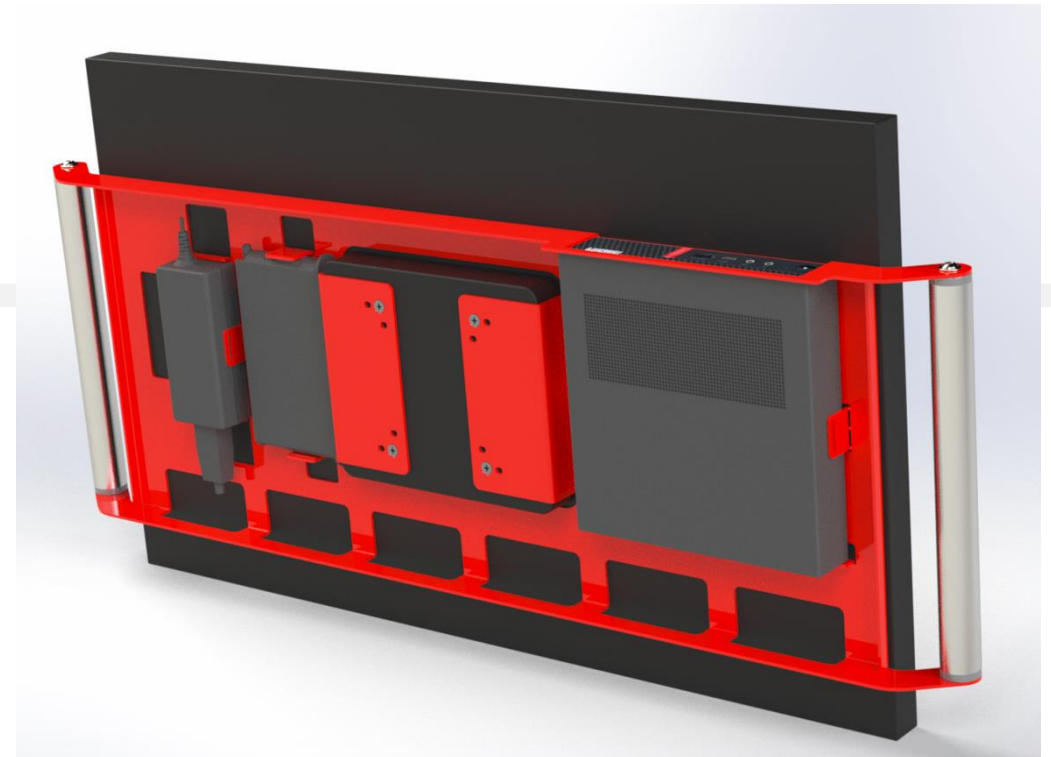
# Kundenspezifische Anpassung (1 HE, 3 HE, 5 HE P.. Workstation)

- **Produkt:** Lenovo ThinkStation P3.. Tower (5 HE); ThinkStation P3.. Ultra (3 HE); P3.. Tiny (1HE)
- **Problemstellung:** Rack Solution für die P3.. Workstation Reihe war im Lenovo Portfolio nicht vorhanden
- **Lösung:** durch die CNS gemeinsam entwickelt; ist jetzt für alle Kunden erhältlich;



# Kundenspezifische Anpassung (Lenovo Instorescreen Display)

- **Problemstellung:** grosser deutscher Lebensmitteldiscounter aus Essen: zu hoher Ausschuss an täglichen Backwaren.
- **Anforderung der Hardware:** einfacher Austausch der Hardware im Servicefall. Einfache Bedienbarkeit durch 2 seitliche Handgriffe aus Edelstahl.
- **Lösung, Produkt:** Lenovo Instorescreen 24'' Display( antibakteriell) , Neo 50 PC, Ergotron Wandhalterung, CNS Backplate
- **Menge:** ca. 5500 europaweit



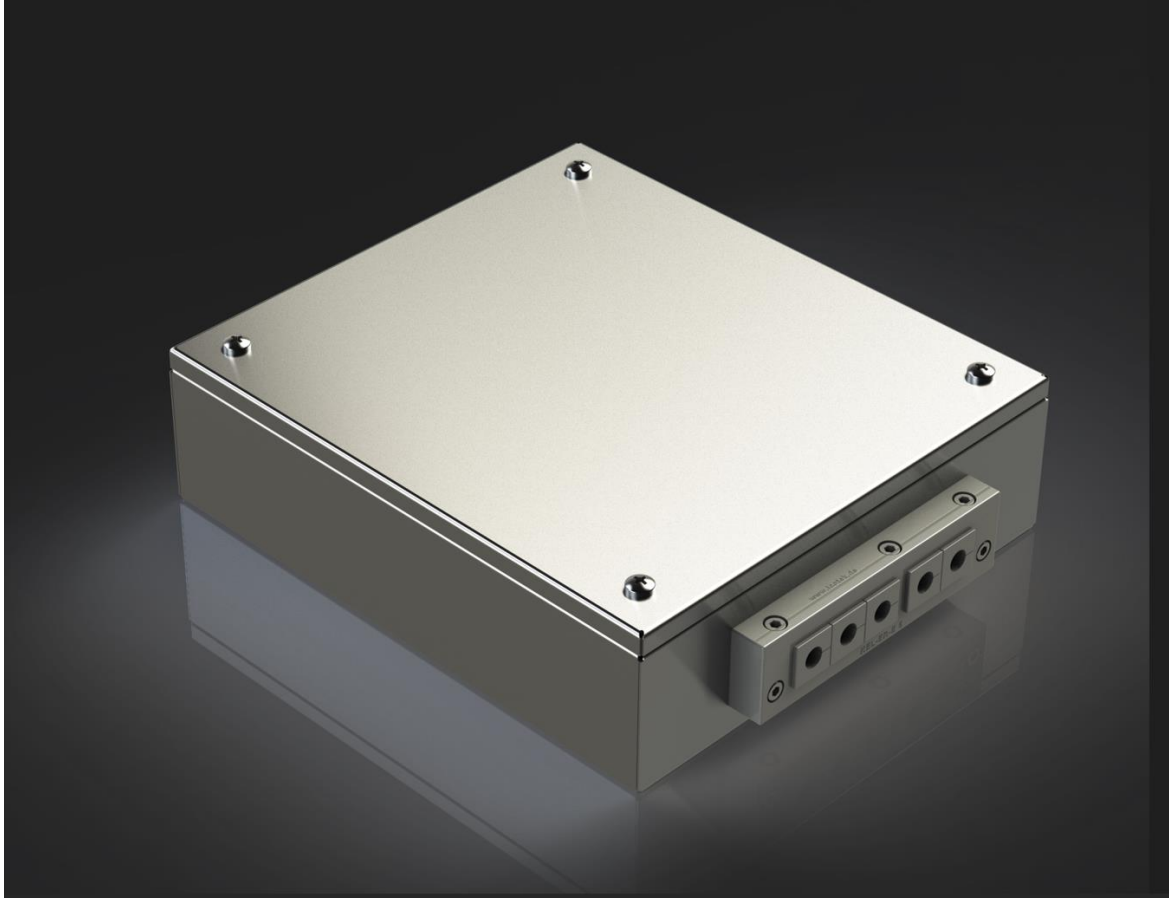
# Lösung Vorderseite



# Bilder vom Kunden – was ist hier passiert?



# Lösung mit der CNS:



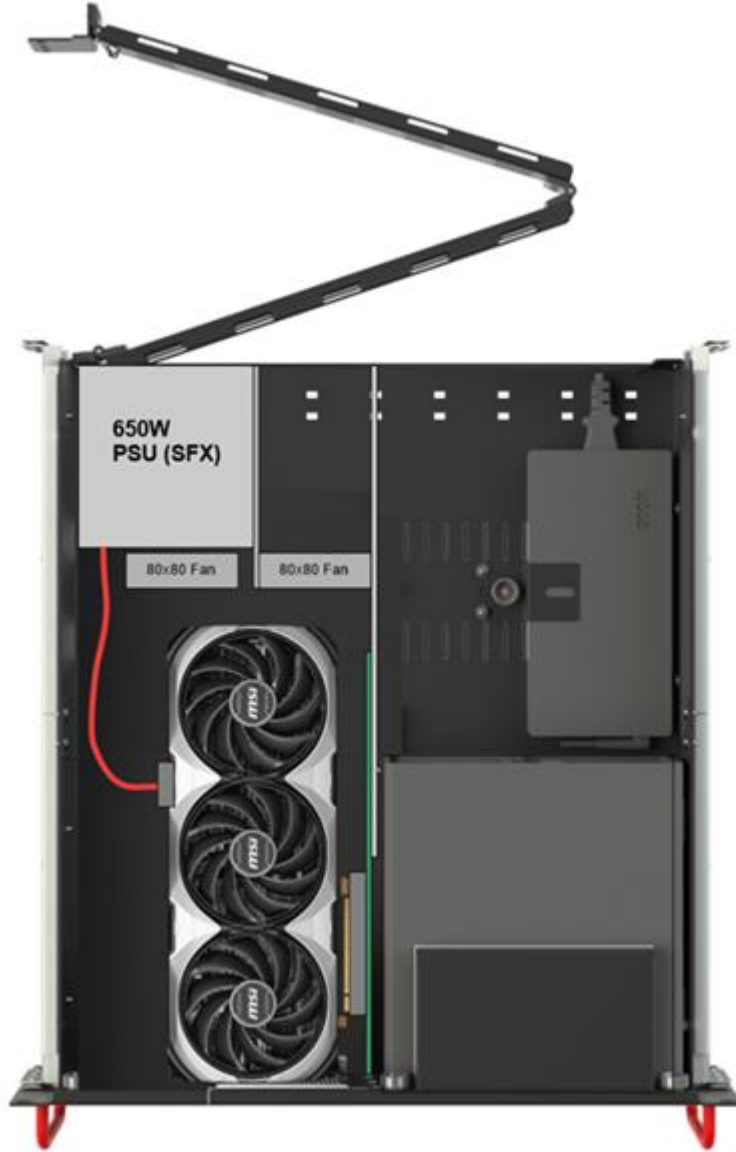


# Weitere Projekte Lenovo OEM / CNS :



Standard P 3 Workstation ergänzt um einen Gehäusedeckel mit der Möglichkeit 2 x 5.25 Zoll Einschübe einzusetzen.

# Weitere Projekte Lenovo OEM / CNS :

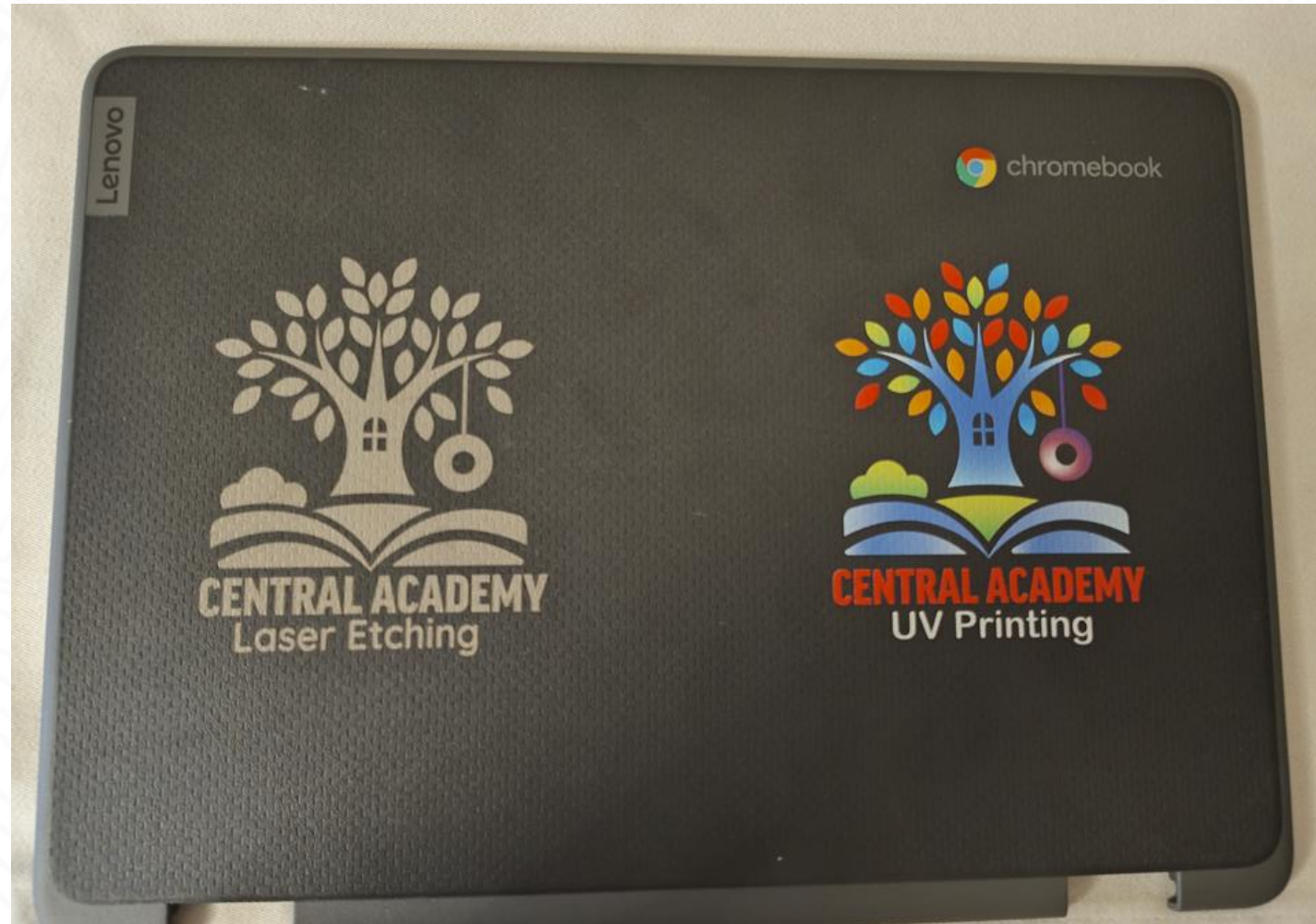


Standard P 3 Workstation ergänzt um leistungsfähige Workstation Grafikkarten im Rack zu ermöglichen.

Kunde möchte ein Branding? Können wir so etwas?



# Ja, können wir



# Maritime Workstation P360 Tiny



## Engineered to succeed, no matter the environment

When you need a reliable machine that meets the highest standards for extreme maritime conditions, you need Lenovo.

### CERTIFIED BY MORE MARITIME AGENCIES THAN ANY OTHER WORKSTATION-CLASS PRODUCT

American Bureau of Shipping (ABS)	Korean Register (KR)
Bureau Veritas (BV)	Lloyd's Register (LR)
China Classification Society (CCS)	Polish Register of Shipping (PRS)
Class NK	Registro Italiane Navale (RINA)
DNV	

- ▶ Lenovo has sought out more certifications than other top hardware providers to solidify the credibility of the ThinkStation P360 Tiny.
- ▶ Testing is based on requirements for installation in closed compartments on bridge and deck zones according to IACS E10 v8 and IEC 60945 for navigational equipment.

**Not only are Lenovo products subjected to safety, EMC, and MilSpec testing, these maritime-certified machines go through extensive additional tests, including:**

- |                     |                   |             |                           |
|---------------------|-------------------|-------------|---------------------------|
| ▶ Dry Heat          | ▶ High Vibration  | ▶ Damp Heat | ▶ Inclination             |
| ▶ High Voltage      | ▶ Cold Tests      | ▶ ESD Tests | ▶ Conducted Low Frequency |
| ▶ Radiated Emission | ▶ Flame Retardant |             |                           |

## ThinkStation® P360 Tiny Maritime Certified (30FF)

Smarter technology for all

Lenovo



With the smallest chassis of any workstation-class product, the Lenovo ThinkStation Tiny series is a powerhouse with a compact footprint.

### A powerful one-liter workstation trusted for optimal performance and accurate data:

- ▶ 96% smaller than a typical device
- ▶ Supports six independent display ports
- ▶ Performance and speed by combining blazing-fast memory with dual M.2 storage support
- ▶ Primed for security with data encryption through TPM and a door to internal components that physically locks

### Configurations Available (Certified for Maritime Standards):

<b>CPU</b>	- Intel 12th generation - Intel i3-12100T 2.2GHz/4C/8T/12M 35W - Intel i5-12500T 2.0GHz/6C/12T/18M 35W - Intel i7-12700T 1.4GHz/12C/20T/25M 35W
<b>Memory</b>	- 8GB, 16GB, and 32GB
<b>Graphics</b>	- Nvidia® T1000E 8GB
<b>HDD</b>	- 512GB - 2TB NVMe SSDs
<b>OS</b>	- Win10 IoT 2021 LTSC or Ubuntu 20.04
<b>Power</b>	- 170W or 230 W <sup>1</sup>



**OEM Extended Lifecycle**  
As part of our OEM program, we can offer up to a 3-year lifecycle from launch, this extended life offering delivers product stability and reliability for your solution. Lenovo will manage EOL transitions and planning, leading advisory on next generation launches for optimal performance configurations and strong technical support.



**Service & Support**  
The ThinkStation P360 Tiny (30FF) is covered by a 3-year standard warranty and can be upgraded up to 5 years with Premier Support levels and several additional services (like "Keep your drive").

To learn more, contact your local Lenovo sales representative.

### Additional options include:

- ▶ Lenovo Intel I350-T2 2-Port or I350-T4 4-Port Ethernet Expansion Card <sup>2</sup>
- ▶ ThinkCentre Tiny VESA Mount II
- ▶ ThinkCentre Tiny Power Cage II
- ▶ ThinkCentre Tiny Sandwich Kit II
- ▶ ThinkCentre Tiny Under Desk Mount Bracket 4
- ▶ ThinkStation P360 OEM Tiny Dust Filter

<sup>1</sup> Only needed with T1000E & i7 processor combo

<sup>2</sup> Only available when no other PCIe card is used (i.e. Graphics or NIC)

[www.lenovo.com/oem](http://www.lenovo.com/oem)

Smarter technology for all

Lenovo

[www.lenovo.com/oem](http://www.lenovo.com/oem)

Smarter  
technology  
for all

Lenovo

thanks.

Lenovo  
OEM Solutions